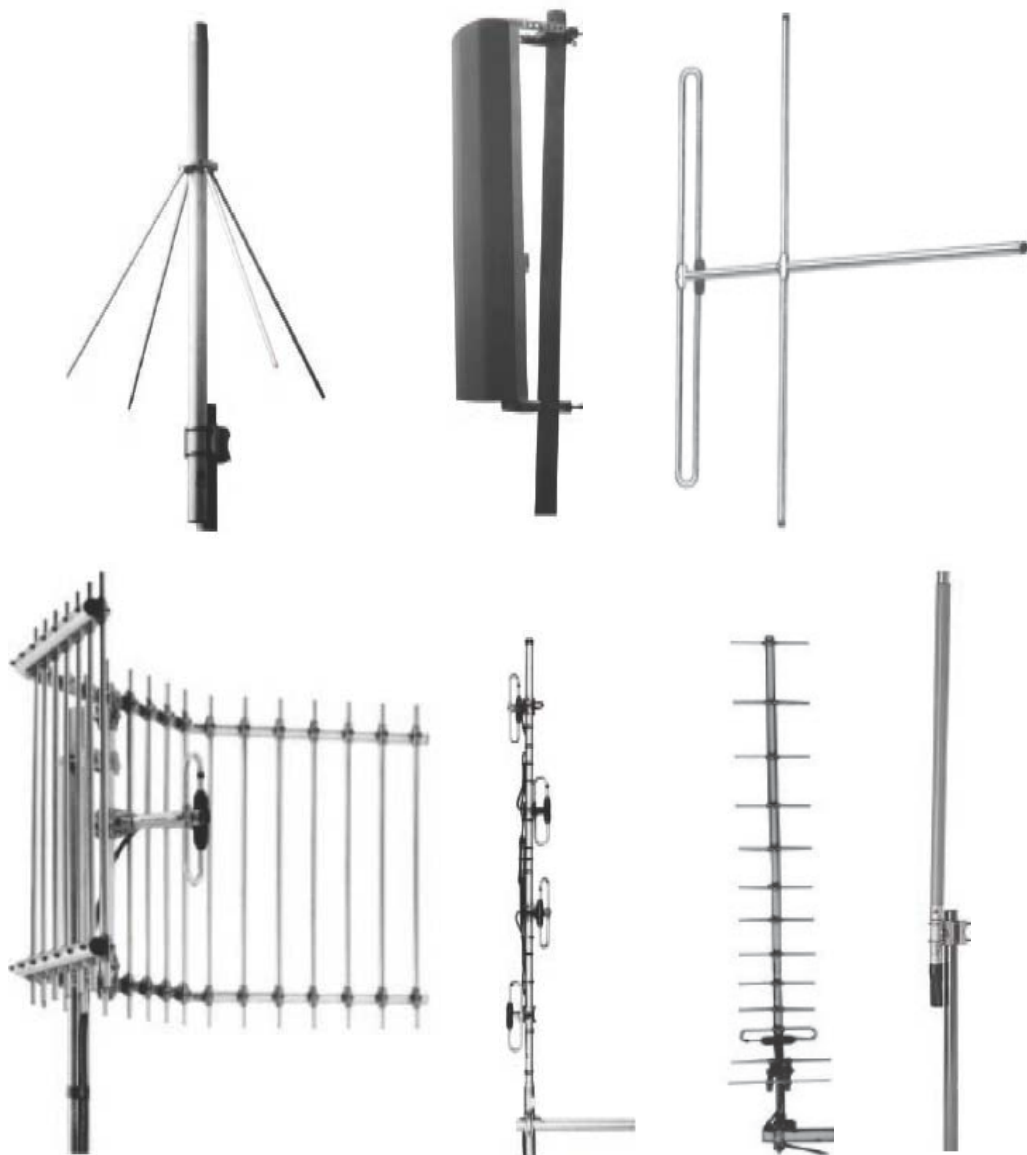


## Antennas 25 to 600 MHz

The DrawCom range of antenna products in 25 to 600 MHz bands include;

- Airband
- Marine
- VHF PMR
- UHF PMR
- TETRA
- TV Reception
- FM Radio

The styles of antennas include omni and directional base-station antennas along with in-building, tunnel and microcell antennas.



# Antennas

## 25 to 600 MHz (cont.)

Part No.	Band(s) (MHz)	Description	Polarity	Nominal Gain (dBd)	Nominal Horizontal Beam Width (deg)	Nominal Vertical Beam Width (deg)	Tilt (deg)	Typical Bandwidth	Termination
MA462DS06	25..470	Ground plane	V	0	360	86	-	2%	UHF Skt
MA412D00	31..41	Ground plane	V	0	360	86	-	2%	UHF Skt
MA411xxx	31..88	Ground plane	V	0	360	86	-	2%	N Skt
MA431Exx	34.4..40.8	End-fed dipole	V	0	360	84	-	2%	N Skt
MA481E36	34-36	Center-fed dipole	V	0	*	80	-	Full	N Skt
MA481E41	39-41	Center-fed dipole	V	0	*	80	-	Full	N Skt
MA521F00	40-48	Ground plane	V	0	360	84	-	Full	N Skt
7034xxx	48..200	End-fed dipole	V	0	360	80	-	2.5%	N Skt
7050xxx	48..250	Center-fed dipole	V/H	0	*	80	-	10%	N Skt
7031xxx	50..250	Yagi, 2 element	V/H	3	150	75	-	6%	N Skt
7049xxx	50..250	Yagi, 3 element	V/H	5	120	70	-	6%	N Skt
7029xxx	50..250	Yagi, 4 element	V/H	7	90	60	-	5%	N Skt
7373xxx	68..110	Colinear	V	3	360	36	0	1%	N Skt
7256xxx	68..156	Dipole Array, Cardioid	V	3	180	76	-	1.5%	N Skt
7323xxx	68..225	Center-fed dipole, high power (300 or 750W)	V/H	0	*	80	-	10%	N Skt
7353xxx	68..230	Yagi, 2 element, high power	V/H	3.3	150	75	-	5%	N Skt
7421xxx	68..230	Yagi, 3 element	V/H	5.7	120	70	-	5%	N Skt
7210xxx	68..230	Yagi, 4 element,	V/H	7.5	90	60	-	5%	N Skt
MA462DS08	68..470	Ground plane	V	0	360	84	-	2%	UHF Skt
MA432H0x	68..88	End-fed dipole	V	0	360	88	-	***	N Skt
MA432H1x	68..88	End-fed dipole - Stainless steel	V	0	360	88	-	***	N Skt
MA421H29	68-75	Yagi, 4 element	V	4.5	90	60	-	Full	N Skt
MA481H02	68-88	Center-fed dipole	V/H	0	*	80	-	Full	N Skt
7249071	71.5-85	Yagi, 3 element	V/H	4.5	130	70	-	Full	N Skt
7313000	71.5-87	Yagi, 2 element	V/H	2.7	170	73	-	Full	N Skt
MA421H06	74-82	Yagi, 2 element	V	2	150	70	-	Full	N Skt
MA421H08	74-82	Yagi, 3 element	V	3	120	65	-	Full	N Skt
MA481H04	78-88	Center-fed dipole	V/H	0	*	80	-	Full	N Skt
MA432H8x	79..87	Colinear	V	1.5	360	68	0	1%	N Skt
MA431H00	83.0-86.6	Colinear	V	1.5	360	68	0	Full	N Skt
MA461H01	83-87	Ground plane	V	0	360	85	-	Full	N Skt
7130xxx	88..175	Yagi, 6 element	V/H	8.5	64	56	-	5%	N Skt
MA481I00	88-108	Center-fed dipole	V/H	0	*	80	-	Full	N Skt
7170xxx	100..470	Dipole Array, cardioid	V	2.8	180	75	-	***	N Skt
7177010	100-500	Discone	V	0	360	80	-	Full	N Skt
7437010	100-500	Discone	V	0	360	80	-	Full	N Skt

All information contained in the present data sheet is subject to confirmation at time of ordering. Print Date: 29/05/2009

Antennas

# Antennas

## 25 to 600 MHz (cont.)

Part No.	Band(s) (MHz)	Description	Polarity	Nominal Gain (dBd)	Nominal Horizontal Beam Width (deg)	Nominal Vertical Beam Width (deg)	Tilt (deg)	Typical Bandwidth	Termination
MA481J00	109-135	Center-fed dipole	V/H	0	*	80	-	Full	N Skt
7273xxx	110..138	Colinear	V	4.5	360	30	0	1%	N Skt
5001000	112-156	Ground plane	V	0	360	90	-	Full	N Skt
7417xxx	130..230	Stacked dipoles, quad. cardioid	V	6.6	180	17	0	5%	N Skt
MA521J00	118-136	End-fed dipole	V	0	360	88	-	Full	N Skt
7500xxx	118..233	End-fed dipole	V	0	360	80	0	***	N or 7/16D Skt
7530xxx	118..270	Colinear	V	3	360	35	0	6MHz	N or 7/16D Skt
7074xxx	130..175	Colinear	V	3	360	31	0	3%	N Skt
7418xxx	130..230	Stacked dipoles dual, cardioid	V	3.6	180	33	0	5%	N Skt
7428xxx	130..230	Stacked dipoles, Dual	V	5	205	33	0	5%	N Skt
7417xxx	130..230	Stacked dipoles, quad. cardioid	V	6.6	180	17	0	5%	N Skt
7042xxx	130..500	Yagi, 6 element, optional low PIM	V/H	8.5	64	56	0	5%	N Skt
7043xxx	130..500	Yagi, 8 element, optional low PIM	V/H	10	54	45	-	5%	N Skt
7513xxx	135..250	Colinear	V	3	360	35	0	***	N Skt
MA432J00	139-153	End-fed dipole	V	0	360	88	0	Full	N Skt
7073xxx	140..250	Colinear	V	5.5	360	18	0	2%	N Skt
7039xxx	140..500	Yagi, 2 element, optional low PIM	V/H	3	150	75	-	6%	N Skt
MA431Kxxx	143..165	Colinear	V	3.5	360	38	0	***	N Skt
MA432Kxxx	144..174	End-fed dipole	V	0	360	88	0	***	N Skt
MA481Kxxx	144..174	End-fed dipole, stainless steel	V	0	360	88	0	***	N Skt
7255xxx	144..175	Stacked dipoles, Omni/Directional	V	5/9	360/150	17	***	6%	N Skt
7427xxx	150..230	Stacked dipoles, quad.	V	8.0	205	17	0	5%	N Skt
7247xxx	150..240	Stacked dipoles	V	6.5	360	19	0..10 options	^	N Skt
7468xxx	150..240	Stacked dipoles	V	8.5	Elliptical	30	0..10 options	^	N Skt
MA421LM01	156-175	Yagi, 2 element	V	2	160	70	-	Full	N Skt
MA421LM02	156-175	Yagi, 3 element	V	4	115	67	-	Full	N Skt
MA421LM05	156-175	Yagi, 8 element, shrouded element	V	9	52	45	-	Full	N Skt
7502xxx	225..512	End-fed dipole	V	0	360	85	0	***	N Skt
7277010	225-400	Discone	V	0	360	80	0	Full	N Skt
7040xxx	300..500	Yagi, 3 element, optional low PIM	V/H	5	120	70	-	5%	N Skt
7041xxx	300..500	Yagi, 4 element, optional low PIM	V/H	7	90	60	-	5%	N Skt
7014xxx	300..500	Yagi, 12 element, Optional low PIM	V/H	12	36	33	-	4%	N Skt
7018xxx	300..500	Yagi, 12 element, high F/B, optional low PIM	V/H	12	36	33	-	4%	N Skt

# Antennas

## 25 to 600 MHz (cont.)

Part No.	Band(s) (MHz)	Description	Polarity	Nominal Gain (dBd)	Nominal Horizontal Beam Width (deg)	Nominal Vertical Beam Width (deg)	Tilt (deg)	Typical Bandwidth	Termination
7051xxx	300..500	Center-fed dipole	V/H	0	*	80	-	10%	N Skt
7501xxx	305..500	End-fed dipole	V	0	360	80	0	***	N or 7/16 Skt
7014385	370-400	Yagi, 12 element, low PIM	V/H	12	36	33	-	4%	N Skt
7548415	380-400/ 410-430	Colinear, 2-in-1	V	4.2/5.1	360	17	5/5	Full	2 x N Skt
7548xxx	380-400	Colinear, 2-in-1	V	4.3/5.2	360	20.5	0,6,12	Full	2 x 7/16D Skt
7586307	380-400	Colinear	V	4.6	360	20	10-15 (Variable)	Full	7/16 DIN Skt
7586580	380-400	Colinear, low PIM	V	5.4	360	18	0	Full	7/16 DIN Skt
7586480	380-400	Colinear, low PIM	V	6	360	18	0	Full	7/16 DIN Skt
75863xx	380-400	Colinear, low PIM	V	6	360	17	0,6,8,12	Full	N or 7/16D Skt
7549387	380-400	Colinear	V	7.9	360	9.0	5-8 (Variable)	Full	7/16 DIN Skt
75492xx	380-400	Colinear, low PIM	V	8.9	360	7.5	0,6	Full	7/16 DIN Skt
7047200	380-430	Stacked dipoles, Omni/Directional	V	5/9	360/150	20	0	Full	7/16D Skt
5023xxx	380-430	Panel Antenna	X	9	80	28	10, 15	Full	2 x 7/16D Skt
71482xx	380-430	Stacked dipoles, sidemount, low PIM	V	9.0	160	17	0,5,10,15	Full	N Skt
5043xxx	380-430	Panel Antenna	X	11.8	80	19	0, 10,15	Full	2 x 7/16D Skt
5201xxx	380-470	Colinear, 2-in-1	V	2.8/2.8	360	36	0	***	2 x 7/16D Skt
7533xxx	380..470	Colinear	V	3	360	35	0	***	N Skt
7536xxx	380..470	Colinear	V	5.5	360	17	0	***	N Skt
5004xxx	380..470	Corner reflector, adjustable beamwidth	V	6.3-9.3	Adjustable 90-180	19	0, 10	***	N Skt
7549xxx	380..470	Colinear	V	8.9	360	7.5	0	***	N Skt
7148xxx	380..470	Stacked dipoles, sidemount	V	9.0	160	17	0,5,10,15	***	N Skt
7047xxx	380..500	Stacked dipoles, Omni/Directional Optional low PIM	V	5/9	360/150	17	0	***	N Skt
7129xxx	380..500	Corner reflector	V	10	35	55	0	9%	N Skt
7019xxx	380..500	Yagi, 18 element	V/H	14	28	27	-	4%	N Skt
7586415	390-425	Colinear	V	5	360	17	5	Full	N or 7/16D Skt
7497390	390-430	Stacked dipoles	V	5.8	160	18	0	Full	N Skt
MA421PR01	400-440	Yagi, 2 element, shrouded element	V/H	2.5	145	70	-	Full	N Skt
MA421PR03	400-440	Yagi, 4 element, shrouded element	V/H	5.5	90	60	-	Full	N Skt
MA421PR04	400-440	Yagi, 6 element, shrouded element	V/H	7.0	70	52	-	Full	N Skt
MA421PR05	400-440	Yagi, 8 element, shrouded element	V/H	9.0	55	45	-	Full	N Skt
7242xxx	400..470	Stacked dipoles, directional	V	5.5	Directional	19	0, 10	^	N Skt

# Antennas

## 25 to 600 MHz (cont.)

Part No.	Band(s) (MHz)	Description	Polarity	Nominal Gain (dBd)	Nominal Horizontal Beam Width (deg)	Nominal Vertical Beam Width (deg)	Tilt (deg)	Typical Bandwidth	Termination
MA421PR06	400-440	Yagi, 10 element, shrouded element	V/H	10.0	50	43	-	Full	N Skt
MA421PR07	400-440	Yagi, 12 element, shrouded element	V/H	11.0	42	35	-	Full	N Skt
MA491QS10	406..470	Corner reflector	V/H	10	50	60	-	***	N Skt
MA481QS06	408..470	Colinear	V	6	360	16	0	8MHz	N Skt
MA481Q02	408-428	End-fed dipole	V	0	360	88	0	Full	N Skt
7175xxx	440..960	Yagi, 8 element	V/H	10	52	48	-	5%	N Skt
MA421RS01	440-470	Yagi, 2 element, shrouded element	V	2.5	150	65	-	Full	N Skt
MA421RS02	440-470	Yagi, 3 element, shrouded element	V	4.5	100	60	-	Full	N Skt
MA421RS03	440-470	Yagi, 4 element, shrouded element	V	6.0	80	57	-	Full	N Skt
MA421RS04	440-470	Yagi, 6 element, shrouded element	V	7.5	65	52	-	Full	N Skt
MA421RS05	440-470	Yagi, 8 element, shrouded element	V	9.0	50	45	-	Full	N Skt
MA421RS06	440-470	Yagi, 10 element, shrouded element	V	10.0	45	39	-	Full	N Skt
MA421RS07	440-470	Yagi, 12 element, shrouded element	V	11.0	38	35	-	Full	N Skt
MA481S02	440-470	End-fed dipole	V	0	360	88	0	Full	N Skt
7345000	450-470	Stacked dipoles, horizontal pol.	H	3	360	35	-	Full	N Skt
7395460	450-470	Downfire antenna	C	6	80	80	-	Full	N Skt
2035xxx	450-900	Log Periodic	V/H	7.5	60	50	-	^	N Skt
LPU/R*	468-860	Log Periodic	V/H	7.9	***	***	-	Full	N or 7/16D Skt
7176xxx	470..960	Yagi, 18 element	V/H	14.4	25	23	-	5%	N Skt
7511xxx	550..1175	End-fed dipole	V	0	360	80	0	***	N Skt

### Notes

- \* - Dependent on the mounting distance from the mast
- \*\* - Cabling depends on power selected (300 or 750W)
- \*\*\* - Please refer to the detailed data sheets
- ^ - Please specify the frequencies required
- ^^ - Other Tilts are available
- ^^^ - Bottom or Rear connectors
- FET - Refers to a Fixed Electrical Tilt antenna
- RET - Refers to a Remote Electrical Tilt system
- VET - Refers to a Variable Electrical Tilt antenna