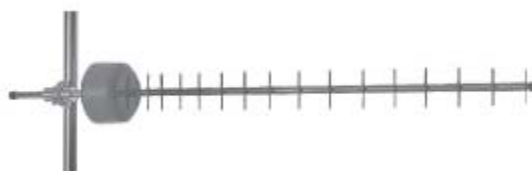


Cellular Antenna Systems 800 - 960MHz

The DrawCom range of Cellular base-station antenna systems in the 800-960 MHz bands include;

- Panel antennas - Single and Dual Polarization
- Yagi antennas
- Omni Antennas
- Tri-Sector antennas
- Remote tilt systems

In this catalogue we detail the dual-pole antennas. Please contact us for single-pole panel information.



Cellular Antenna Systems

800 - 960MHz

Single Band Panel Antennas

Part No.	Band(s) (MHz)	Description	Polarity	Nominal Gain (dBi)	Nominal Horizontal Beam Width (deg)	Nominal Vertical Beam Width (deg)	Tilt (deg)	Length (mm)	No. and location of 7/16 DIN Skt Connectors
B800X065-13-x	806-896	Panel Antenna, FET	X	15.0	65	15.5	0,6	1300	2 at bottom
B800X065-19-x	806-896	Panel Antenna, FET	X	16.5	65	10.0	0,6	1900	2 on rear
5096000	806-896	Panel Antenna, FET	X	17.0	53	8.0	0	2410	2 on rear
B800X065-25-x	806-896	Panel Antenna, FET	X	18.0	65	8.0	0,6	2500	2 at bottom
SLX085X13x000	806-940	Panel Antenna, VET, Optional RET	X	13.5	85	14.5	2-14	1394	2 at bottom
SLX065X13x000	806-940	Panel Antenna, VET, Optional RET	X	14.5	65	14.5	2-14	1394	2 at bottom
SLX085X20x000	806-940	Panel Antenna, VET, Optional RET	X	15.0	85	9.0	2-10	2095	2 at bottom
SLX065X20x000	806-940	Panel Antenna, VET, Optional RET	X	16.0	65	9.0	2-10	2095	2 at bottom
5010860	806-960	Panel Antenna, FET	X	18.0	65	7.7	0	2705	2 at bottom
5095004	824-892	Panel Antenna, FET	X	14.7	53	15.5	4	1200	2 on rear
5140864	824-896	Panel Antenna, FET	X	17.0	42	14.7	4	1210	2 at bottom
5090000	870-960	Panel Antenna, FET	X	13.2	85	16.5	0	1150	2 at bottom
5065xxx	870-960	Panel Antenna, FET	X	14.6	65	16.4	0,4,8	1150	2 at bottom
76893xx	870-960	Panel Antenna, FET	X	16.0	85	8.6	0,4,6	2300	2 at bottom
GSMV065-19-x	870-960	Panel Antenna, FET	X	17.0	65	10.0	0,4,6	1900	2 at bottom
76884xx	870-960	Panel Antenna, FET	X	17.4	60	9.2	0,2	2300	2 at bottom
5140000	870-960	Panel Antenna, FET	X	17.5	40	14.0	0	1210	2 at bottom
501020x	870-960	Panel Antenna, FET	X	18.0	65	7.6	0,4,6,9	2705	2 at bottom
5290100	880-960	Panel Antenna, VET, Optional RET	X	16.0	85	7.0	0-10	2690	2 at bottom
501100x	880-960	Panel Antenna, FET	X	16.5	85	6.9	0,6	2705	2 at bottom
5264102	880-960	Panel Antenna, VET, Optional RET	X	16.5	65	9.0	0-10	2050	2 at bottom
5265102	880-960	Panel Antenna, VET, Optional RET	X	17.5	65	7.0	0-10	2690	2 at bottom

Notes

- FET - Refers to a Fixed Electrical Tilt antenna
- RET - Refers to a Remote Electrical Tilt system
- VET - Refers to a Variable Electrical Tilt antenna
- x - Please refer to the detailed specifications for options

Cellular Antenna Systems 800 - 960MHz Tri-Sector Antennas

Part No.	Band(s) (MHz)	Description	Polarity	Nominal Gain (dBi)	Nominal Horizontal Beam Width (deg)	Nominal Vertical Beam Width (deg)	Tilt (deg)	Length (mm)	No. and location of 7/16 DIN Skt Connectors
SL3X065X17X00	806-940	Tri-Sector Antenna, VET, Optional RET	X X X	14.5	65	14.5	2-14	1727	6 at bottom
GSM3X75-13-2	870-960	Tri-Sector Antenna, FET	X X X	14.5	75	12.5	2	1520	6 at bottom
GSM3X75-13-A	870-960	Tri-Sector Antenna, VET	X X X	14.5	73	14.5	2-12	1905	6 at bottom
GSM3X75-22-A	870-960	Tri-Sector Antenna, VET	X X X	15.0	73	10.0	2-12	2515	6 at bottom

Cellular Antenna Systems 800 - 960MHz Omni Antennas

Part No.	Band(s) (MHz)	Description	Polarity	Nominal Gain (dBi)	Nominal Horizontal Beam Width (deg)	Nominal Vertical Beam Width (deg)	Tilt (deg)	Length (mm)	Termination
7556xxx	800..960	Omni, Colinear, 35 MHz bandwidth	V	7.8	360	17	0	1280	N Skt
7560860	806-896	Omni, Colinear	V	11	360	6.8	0	3450	N or 7/16D Skt
MA430UV00	824-896	Omni, Colinear	V	4.5	360	33	0	730	5m cable
75868x0	824-896	Omni, Colinear	V	7.5	360	16	0	1590	N or 7/16D Skt
7580000	825-896	Omni, Colinear	V	10.2	360	7.2	0	3370	N Skt
MA431UV00	870-960	Omni, Colinear	V	4.7	360	33	0	845	N Skt
7547000	870-960	Omni, Colinear, 3-in-1	V	6.0/6.3/6.5	360/360/360	17/17/17	0/0/0	3960	3 x 7/16D Skt
7586900	870-960	Omni, Colinear	V	7.5	360	16	0	1590	N or 7/16D Skt
755500x	870-960	Omni, Colinear, 2-in-1	V	9.0/9.3	360/360	8.5/8.5	0,3	5250	2 x 7/16D Skt
7558xxx	870-960	Omni, Colinear	V	10.0	360	7.7	0,3,4,6,7,8,9,10	2580	N or 7/16D Skt
7560x0x	870-960	Omni, Colinear	V	11.0	360	6.2	0,3	3300	N or 7/16D Skt
7572000	872-960	Omni, Colinear	V	9.0	360	9.0	0	2900	7/16 DIN Skt
7572006	872-960	Omni, Colinear	V	9.0	360	9.5	6	2900	7/16 DIN Skt
751000x	872-960	Omni, Colinear	V	9.3	360	9.7	0,6,8	2890	7/16 DIN Skt
754500x	872-960	Omni, Colinear	V	9.3	360	8.5	0,3,4,5	2820	N Skt
7559000	880-960	Omni, Colinear, 2-in-1	V	6.5/7.0	360	17/17	0,0	2720	2 x 7/16D Skt

Print Date: 29/05/2009

All information contained in the present data sheet is subject to confirmation at time of ordering.

Cellular Antenna Systems

800 - 960MHz

Yagi Antennas

Part No.	Band(s) (MHz)	Description	Polarity	Nominal Gain (dBi)	Nominal Horizontal Beam Width (deg)	Nominal Vertical Beam Width (deg)	Length (mm)	Termination
MA420TV16	806-894	Yagi Antenna	V/H	11	55	45	680	RG58
MA420TV10	806-894	Yagi Antenna	V/H	15	30	35	1400	RG58
MA420TV07	806-894	Yagi Antenna	V/H	15	30	35	1400	RG58, TNC male (loose)
MA420TV02	806-960	Yagi Antenna	V/H	8	50	56	520	RG58
MA420TV03	806-960	Yagi Antenna	V/H	8	50	56	520	RG58, mini UHF (loose)
MA420TV01	806-960	Yagi Antenna	V/H	13	35	41	970	RG58
MA420TV05	806-960	Yagi Antenna	V/H	13	35	41	970	RG58, TNC male (loose)
7190860	824-892	Yagi Antenna	V/H	12.2	56	45	1020	N Skt
7142860	824-892	Yagi Antenna	V/H	17	24	24	2530	N Skt
7168860	824-896	Yagi Antenna	V/H	11	58	50	741	N Skt
7160860	824-896	Yagi Antenna	V/H	13.2	42	38	1080	N Skt
7132860	824-896	Yagi Antenna	V/H	16.7	27	25	2200	N Skt
MA423UV03	870-960	Yagi Antenna	V/H	7	94	60	210	N Skt
7132900	870-960	Yagi Antenna	V/H	16.7	27	25	2000	N Skt
7142900	870-960	Yagi Antenna	V/H	17.3	24	24	2500	N Skt
7168900	880-960	Yagi Antenna	V/H	11	58	50	720	N Skt
7190900	880-960	Yagi Antenna	V/H	12.2	56	45	990	N Skt
7160900	880-960	Yagi Antenna	V/H	13.2	42	38	1050	N Skt
7173900	880-960	Yagi Antenna	V/H	14.5	40	37	1350	N Skt

Print Date: 29/05/2009

All information contained in the present data sheet is subject to confirmation at time of ordering.

Antennas