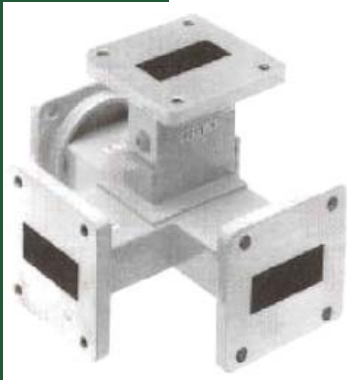


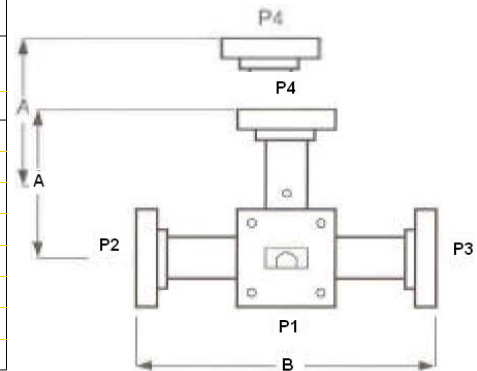
Magic Tee's



Magic Tees, as the name implies are tee junctions constructed in the form of a **T**. the power at an input arm is equally divided between two properly matched output arms, i.e. they are 3 dB power dividers. Magic Tees are used in balance mixers, automatic frequency control circuits and comparison circuits.

Electrical specifications	
Typical bandwidth:	500 MHz in most common frequency bands
Power split:	± 0.1 dB
Max. VSWR:	1.2:1
Isolation between non co-linear ports:	30 dB min

MAGIC TEES					
Part No.	WR Type	Frequency Range (GHz)	Power Rating (W)	Dimensions (in.)	
				A	B
M1352	229	3.540 – 4.200	900	4.0	8.0
M0919	137	5.925 – 6.425	750	2.6	5.2
M0949	112	7.720 – 8.270	500	2.0	4.0
M1353	90	10.700 – 11.700	400	1.9	3.8
M1354	75	12.500 – 13.200	300	1.5	3.0
M1284	75	11.700 – 12.200	300	1.5	3.0
M1710	75	14.000 – 14.500	300	1.5	3.0
M1355	62	12.400 – 18.000	300	1.1	2.2



ORDERING INFORMATION

- Specify flanges required by adding flange code after model number.

Ordering Example

Part No.	Flange P1	Flange P2	Flange P3	Flange P4
M0919	1	2	2	1

Part Number – M0919-1-2-2-1

The example describes a WR 137 Magic Tee with a CPR-G flange on Ports 1 & 4, and CPR-F flange on Ports 2 & 3.

FLANGE NUMERIC CODES	
Code	Flange*
1	CPR-G
2	CPR-F
3	CMR Standard
4	CMR 8 Clear Holes
5	CMR 8 Tapped Holes
6	UG Cover
7	UG Choke
8	Special: specify
9	PDR
10	UDR

*Brass unless otherwise requested

Consult us for more details regarding your particular requirements.